

**HICKMAN COUNTY HISTORICAL & GENEALOGICAL SOCIETY**  
**107 SOUTH WASHINGTON STREET**  
**CLINTON, KY 42031**

**JANUARY 2015**

**VOLUME 2 ISSUE 1**

**HAPPY NEW YEAR TO**  
**ALL FROM THE**  
**MEMBERS OF THE**  
**HISTORICAL**  
**SOCIETY!!!!**

THIS PAST YEAR HAS BEEN A VERY GOOD AND VERY BUSY YEAR. WHEN 2014 STARTED WE REALLY DIDN'T KNOW WHETHER WE WOULD BE UP AND RUNNING AT ALL THIS YEAR

BUT WITH A COUPLE OF NEW VOLUNTEERS AND WE HAVE MOST OF OUR MATERIALS READY FOR RESEARCH AND WE ARE MAKING HEAD WAY ON SEVERAL DIFFERENT PROJECTS.

ONE OF THESE PROJECTS ARE MARRIAGE RECORDS FROM ABOUT 1946 TO THE 1960'S THAT ARE BEING PLACED IN THREE RING BINDERS BY ANGIE AND CARILA MCCOWAN.

ALSO WE WILL BE PLACING ALL OF OUR SCHOOL PICTURES IN BINDERS AND WILL BE MUCH EASIER TO USE BY RESEARCHERS. NORMA HUMPHREYS AND CARLENE

BLACK IS WORKING ON THIS TASK. ALSO WE ARE TRYING TO IDENTIFY ALL PERSONS, OR AS MANY AS WE CAN ON THE PHOTOGRAPHS.

We have a new website that is on line now. Address is [www.hickmancountykyhistory.org](http://www.hickmancountykyhistory.org). We have our store open and a query page. You may leave a query on the page or go to the research page and leave us info that you would like to find.

Our dues are \$12.00 a year. We will be sending out 4 journals instead of 2. At least we are going to try to do this. Dues are collected in January but one can join at any time.

With the coming of the New Year we will be starting our history time-line with the eighth grade at the high school

Also in the spring the reading garden will be getting underway.

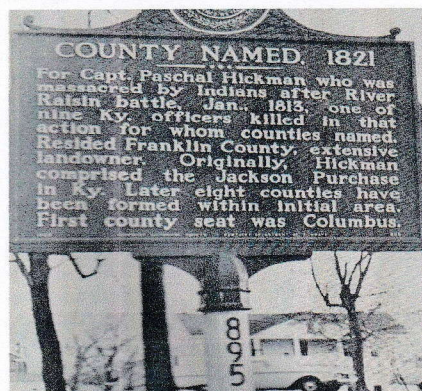


**HICKMAN COUNTY HISTORICAL & GENEALOGICAL SOCIETY**  
**107 SOUTH WASHINGTON STREET**  
**CLINTON, KY 42031**

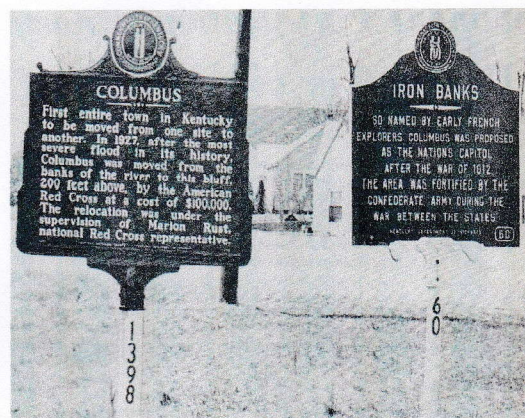
**JANUARY 2015**

**VOLUME 2 ISSUE 1**

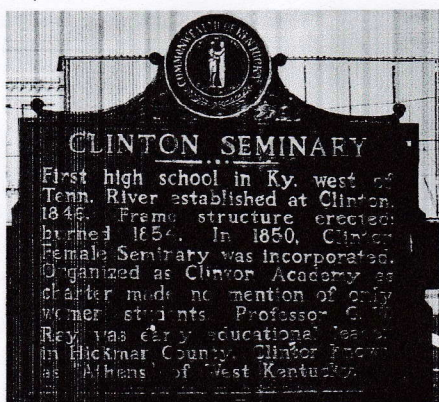
**THE HISTORICAL  
 SOCIETY WILL BE OPEN  
 DURING THE WINTER  
 MONTHS ON  
 WEDNESDAY AND  
 SATURDAY  
 AFTERNOONS FROM 1-4  
 P. M. WEATHER  
 PERMITTING.**



The county has some new highway signs commemorating the Cherokee Trail of Tears. Hickman County has a vast amount of historical information. We have several other Kentucky Historical Markers that have been erected in years past. One has information about Captain Paschal Hickman who Hickman County was named for and the second one is about the Clinton Seminary. These can be found on the courthouse square.



**THERE ARE TWO THAT  
 ARE LOCATED SIDE BY  
 SIDE ON KENTUCKY  
 HIGHWAY 58 AT  
 COLUMBUS. THE 60 ON  
 THE IRON BANKS MEANS  
 IT WAS THE 60<sup>TH</sup>  
 MARKER ERECTED IN  
 THE STATE.**



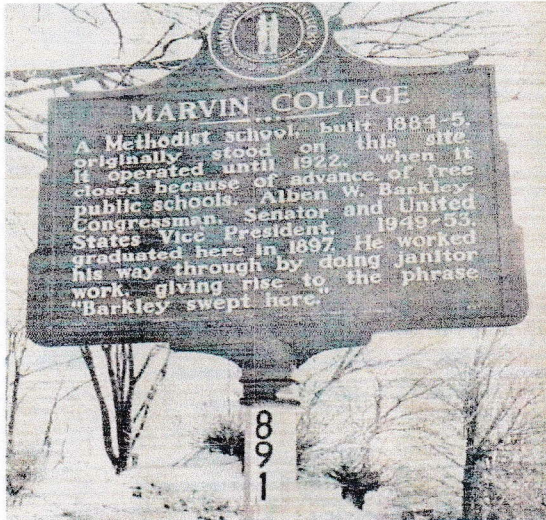
**If you haven't visited the Hickman  
 County Historical Society, we  
 invite you to come and see what we  
 are doing and you might like to join  
 us!!!!!!**



**HICKMAN COUNTY HISTORICAL & GENEALOGICAL SOCIETY**  
**107 SOUTH WASHINGTON STREET**  
**CLINTON, KY 42031**

**JANUARY 2015**

**VOLUME 2 ISSUE 1**



Another marker was placed in the front of the Jewell Hotel as it was once the Marvin College.

The next marker has information on a guerilla raid that took place during the Civil War. It was erected on the south city limits of Clinton on U. S. Highway 51.



I can't seem to find this one on Highway 51 now.

**WE HAVE TWO MEMBERS ON OUR "HICKMAN COUNTY WALL OF HEROES"!! IF YOU HAVE SOMEONE IN MIND, PLEASE LET A MEMBER KNOW.**

If someone has old pictures or any information on the old businesses of Hickman County, we would like to have a copy. If you bring them to the society we will be glad to make a copy and return it to you.

Also a book is being planned to record all the histories of the churches in Hickman County. Any pictures of churches, Sunday school classes, or any other happenings at the churches, would be most appreciated.

**The Historical Society will not have a meeting in January. We will have our first meeting of the year in February, 2015. All members are asked to come and visitors are always welcome.**

*We would like to say "Thank You" to everyone who have supported the society this last year with*



**HICKMAN COUNTY HISTORICAL & GENEALOGICAL SOCIETY**  
**107 SOUTH WASHINGTON STREET**  
**CLINTON, KY 42031**

**JANUARY 2015**

**VOLUME 2 ISSUE 1**

monetary donations, research materials given or memorabilia items that have been given to the Historical Society. We are strictly non-profit and all work done is volunteer. We stay open with your generosity and our books sold and dues paid by members. Our primary goal is to collect and preserve the records of Hickman County and materials relating to its history. Thank You

**SLAP-OUT**

This summer I was in the courthouse and talked to someone who gave me some information on the community/store "Slap-Out". I made a few notes but would like to talk to the person who gave me the information. "T. O. Copeland owned a store, I think it was in the area. The store was a stop for the train that went through off the train they would go over to the store to get something to eat and drink. They would ask Mr. Copeland about buying a drink and he usually would be out of drinks. He would slap his pants leg and say "I'm plum slap-out". LaDonna

QUESTIONS WE WOULD LIKE TO KNOW THE ANSWER TO:

Does anyone know for whom/what the community of Croley was named for?

Was Wesley and Beelerton the same community or were they two different ones?

What was the origin of Moscow's name?



Allen Methodist Church

Does anyone know anything about this church? It was called Allen Methodist Church. I would like to know where it was located, and maybe some of the members. I would like to include it in the book of Hickman County Church Histories that is being planned for this next year. Please call LaDonna at 270-653-4190 or 254-6360.

HICKMAN COUNTY HISTORICAL SOCIETY  
MEMBERSHIP

OUR DUES ARE \$12.00 YEARLY MEMBERS WILL RECEIVE TWO  
NEWS JOURNALS ONE IN JUNE AND ONE IN DECEMBER

NAME \_\_\_\_\_

ADDRESS \_\_\_\_\_

\_\_\_\_\_

CELL NUMBER \_\_\_\_\_

E-MAIL ADDRESS \_\_\_\_\_

FAMILIES RESEARCHING OR HISTORICAL INFO THAT YOU WOULD  
LIKE \_\_\_\_\_

\_\_\_\_\_

\_\_\_\_\_

FEEL FREE TO SEND US A QUERY ON YOUR FAMILY OR A HISTORY  
FACT TO BE INCLUDED IN OUR NEXT JOURNAL.

WE ASK YOUR PERMISSION TO INCLUDE YOUR E-MAIL ADDRESS  
WITH YOUR QUERY. YES \_\_\_\_\_ NO \_\_\_\_\_

HICKMAN COUNTY HISTORICAL SOCIETY  
1148 STATE ROUTE 3061  
CLINTON, KY. 42031